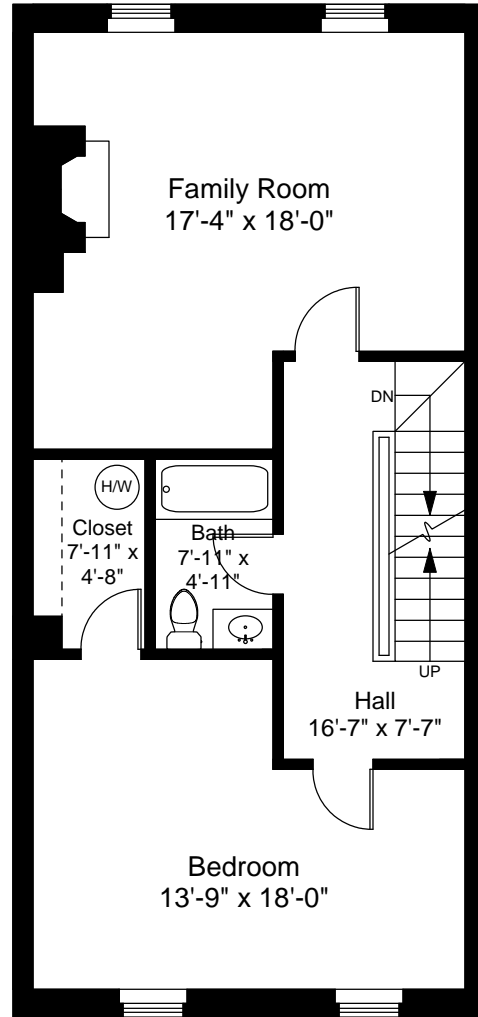


First Floor Plan
Ceiling Height = 8'-6"



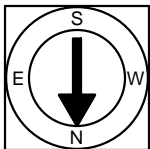
Second Floor Plan
Ceiling Height = 8'-6"

25 Union Wharf
Boston, MA 02109



Scale 1/8" = 1'-0"

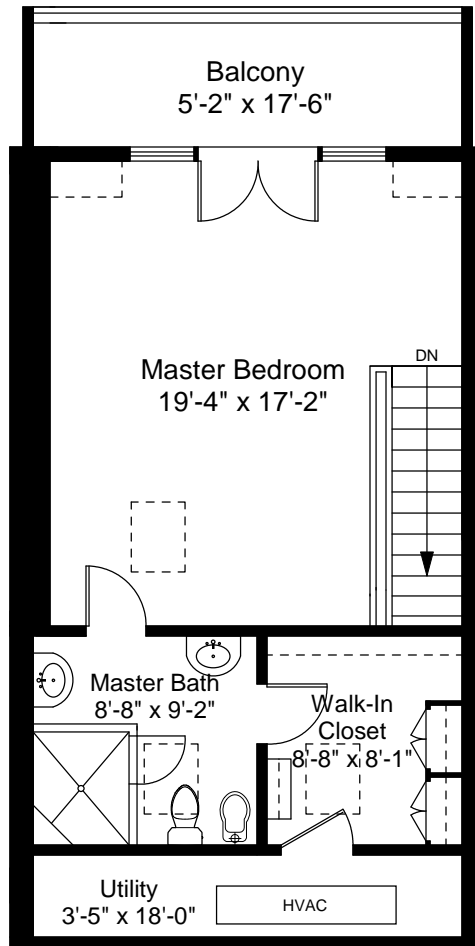
1



Completed: January, 2013

Note: Dimensions are not guaranteed and are provided for informational purposes only.

NEW ENGLAND
FLOOR PLANS
& PHOTOGRAPHY
(800) 328-0217



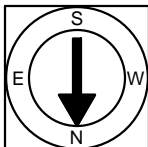
Third Floor Plan
 Vaulted Ceiling Height = 12'-4"

25 Union Wharf
 Boston, MA 02109



Scale 1/8" = 1'-0"

2



Completed: January, 2013

Note: Dimensions are not guaranteed and are provided for informational purposes only.

NEW ENGLAND
 FLOOR PLANS
 & PHOTOGRAPHY
 (800) 328-0217