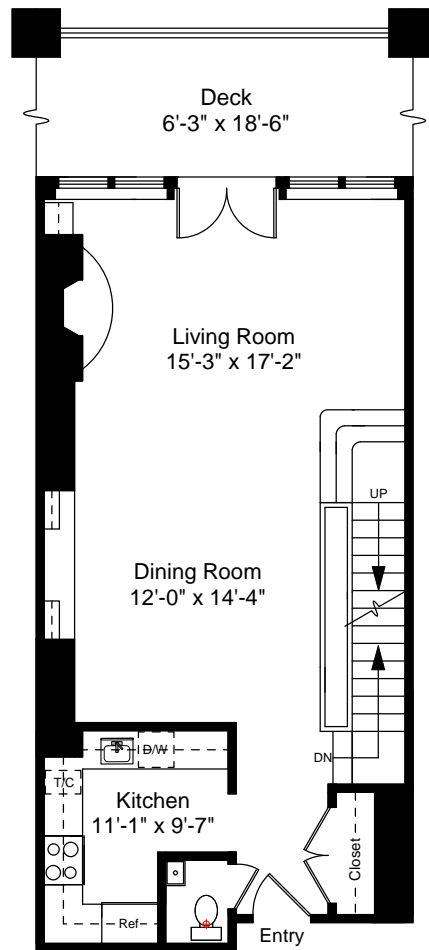
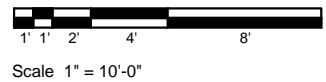


Lower Level Floor Plan
Ceiling Height = 8'-5"

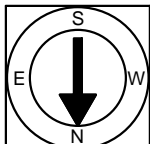


Entry Level Floor Plan
Ceiling Height = 8'-4"

50 Battery Street, PH 5
Boston, MA 02109



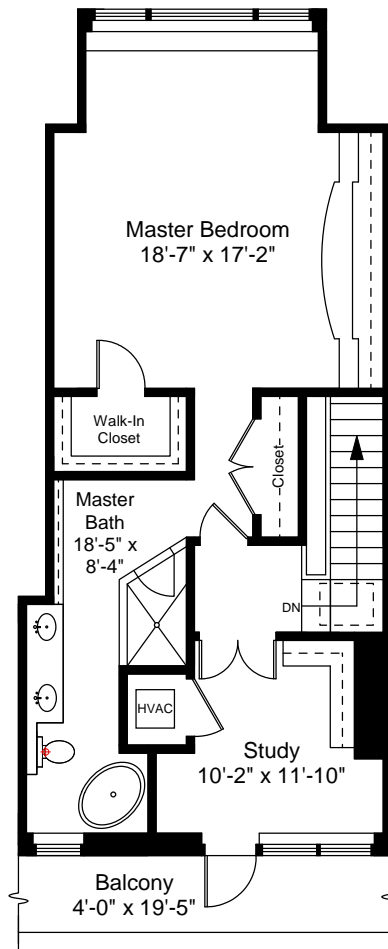
1



Completed: May, 2010

Note: Dimensions are not guaranteed and are provided for informational purposes only.

NEW ENGLAND
FLOOR PLANS
& PHOTOGRAPHY
(800) 328-0217



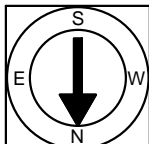
Upper Level Floor Plan
Ceiling Height = 8'-8"

50 Battery Street, PH 5
Boston, MA 02109



Scale 1" = 10'-0"

2



Completed: May, 2010

Note: Dimensions are not guaranteed and are provided for informational purposes only.


NEW ENGLAND
— FLOOR PLANS —
& PHOTOGRAPHY
(800) 328-0217