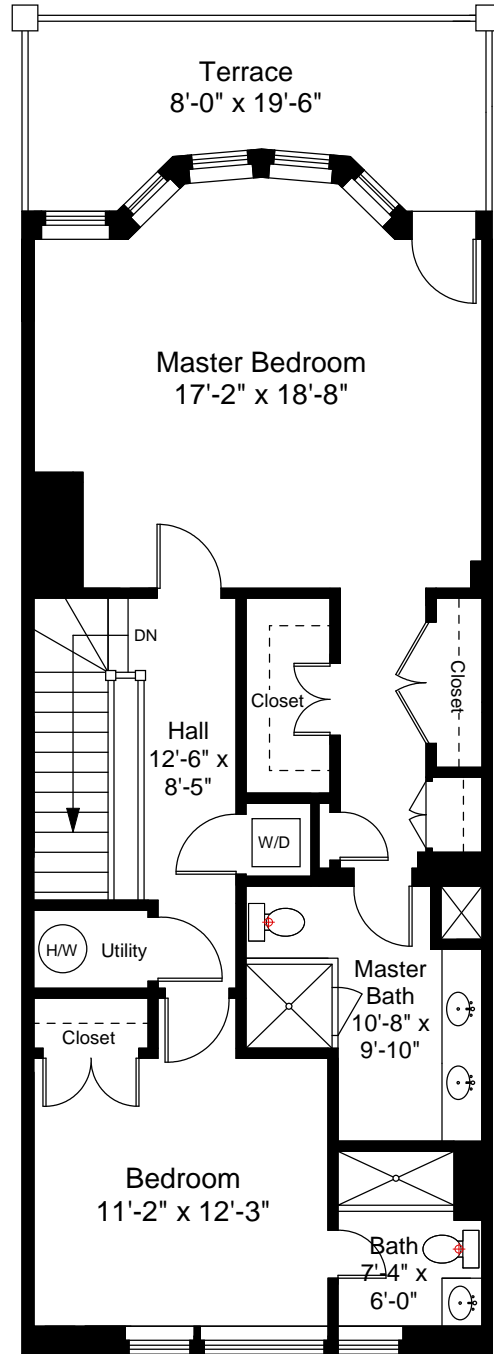


First Floor Plan
Ceiling Height = 8'-8"



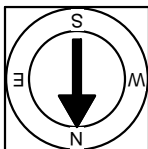
Scale 1/8" = 1'-0"

40 Battery Street, Unit 306
Boston, MA 02109



Second Floor Plan
Ceiling Height = 8'-9"

1



Completed: April, 2011

Note: Dimensions are not guaranteed and are provided for informational purposes only.


NEW ENGLAND
FLOOR PLANS
(800) 328-0217