

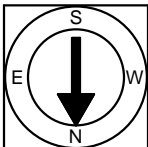
First Floor Plan
Ceiling Height = 8'-6"

50 Battery Street, TH 103 & 104
Boston, MA 02109



Scale 1/8" = 1'-0"

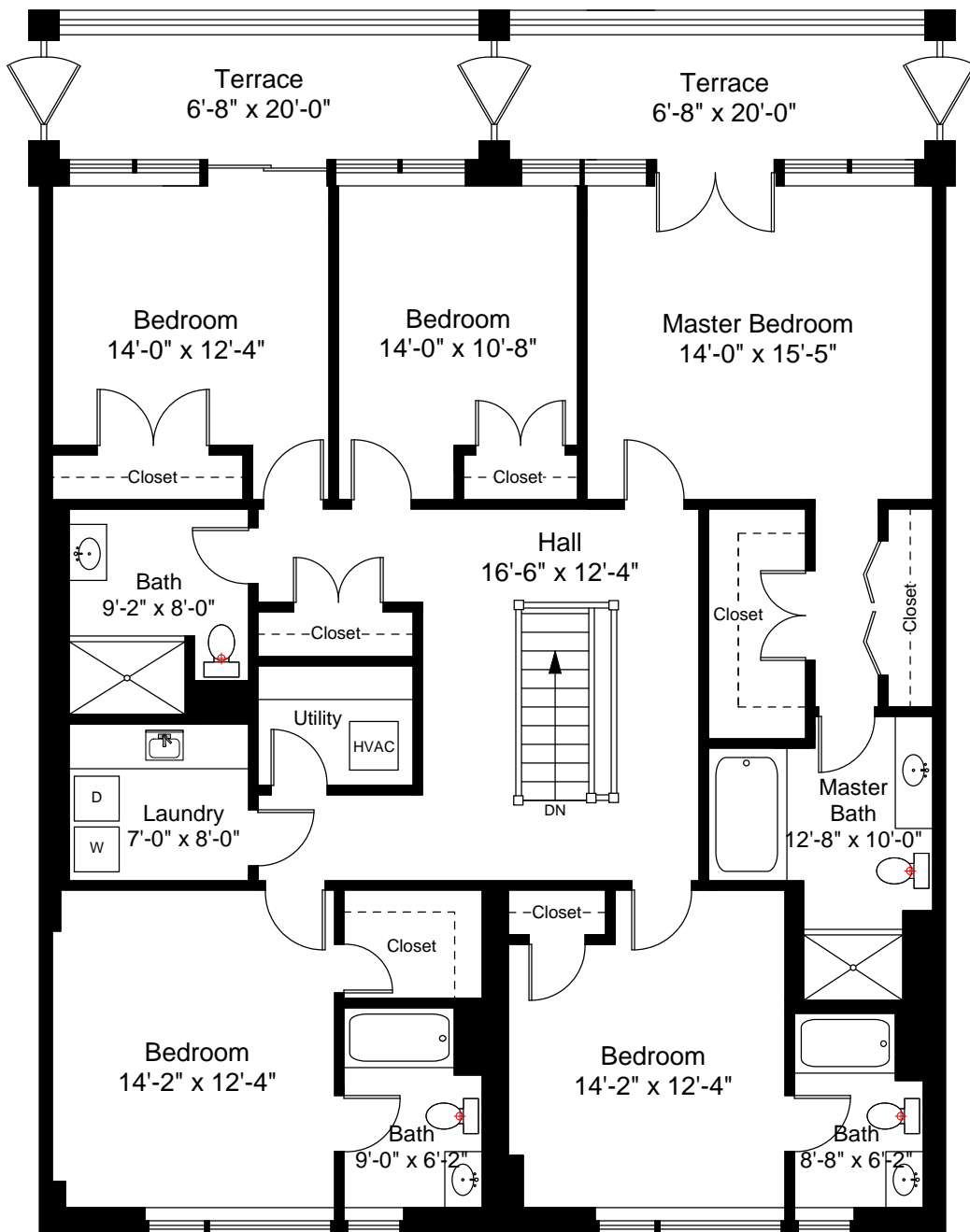
1



Completed: March, 2009

Note: Dimensions are not guaranteed and are provided for informational purposes only.

NEW ENGLAND
— FLOOR PLANS —
& PHOTOGRAPHY
(800) 328-0217



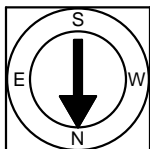
Second Floor Plan
Ceiling Height = 8'-2"

50 Battery Street, TH 103 & 104
Boston, MA 02109



Scale 1/8" = 1'-0"

2



Completed: March, 2009

Note: Dimensions are not guaranteed and are provided for informational purposes only.

NEW ENGLAND
FLOOR PLANS
& PHOTOGRAPHY
(800) 328-0217