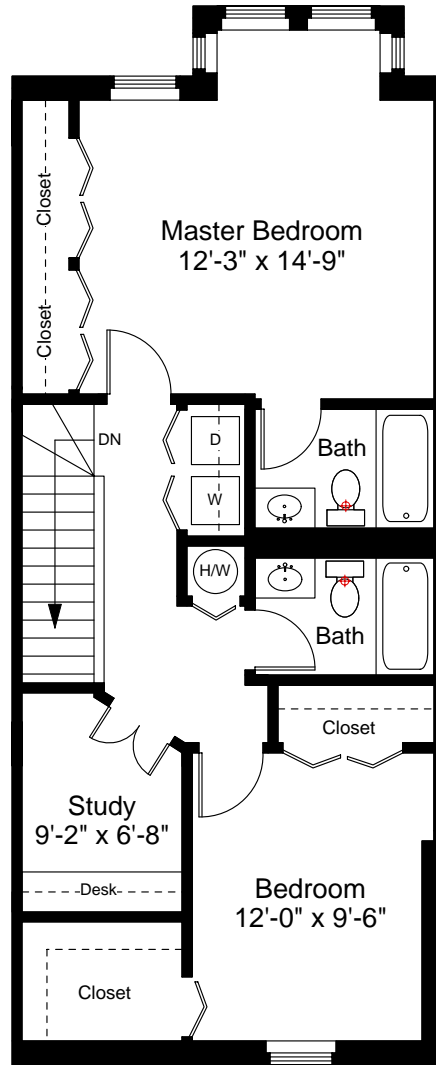


First Floor Plan
Ceiling Height = 7'-8"



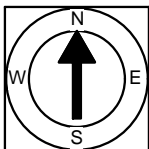
Second Floor Plan
Ceiling Height = 7'-9"

376 Commercial Street, Unit 2G
Boston, MA 02109



Scale 1/8" = 1'-0"

1



Completed: May, 2007

Note: Dimensions are not guaranteed and are provided for informational purposes only.

NEW ENGLAND
FLOOR PLANS
(617) 872-3336