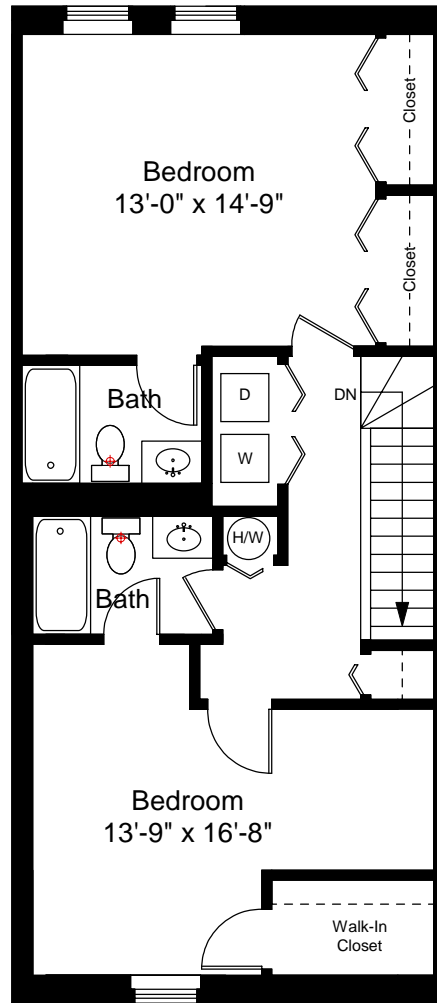


First Floor Plan
Ceiling Height = 7'-9"



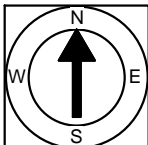
Second Floor Plan
Ceiling Height = 7'-9"

376 Commercial Street, Unit 2H
Boston, MA 02109



Scale 1/8" = 1'-0"

1



Completed: April, 2008

Note: Dimensions are not guaranteed and are provided for informational purposes only.


NEW ENGLAND
FLOOR PLANS
& PHOTOGRAPHY
(800) 328-0217