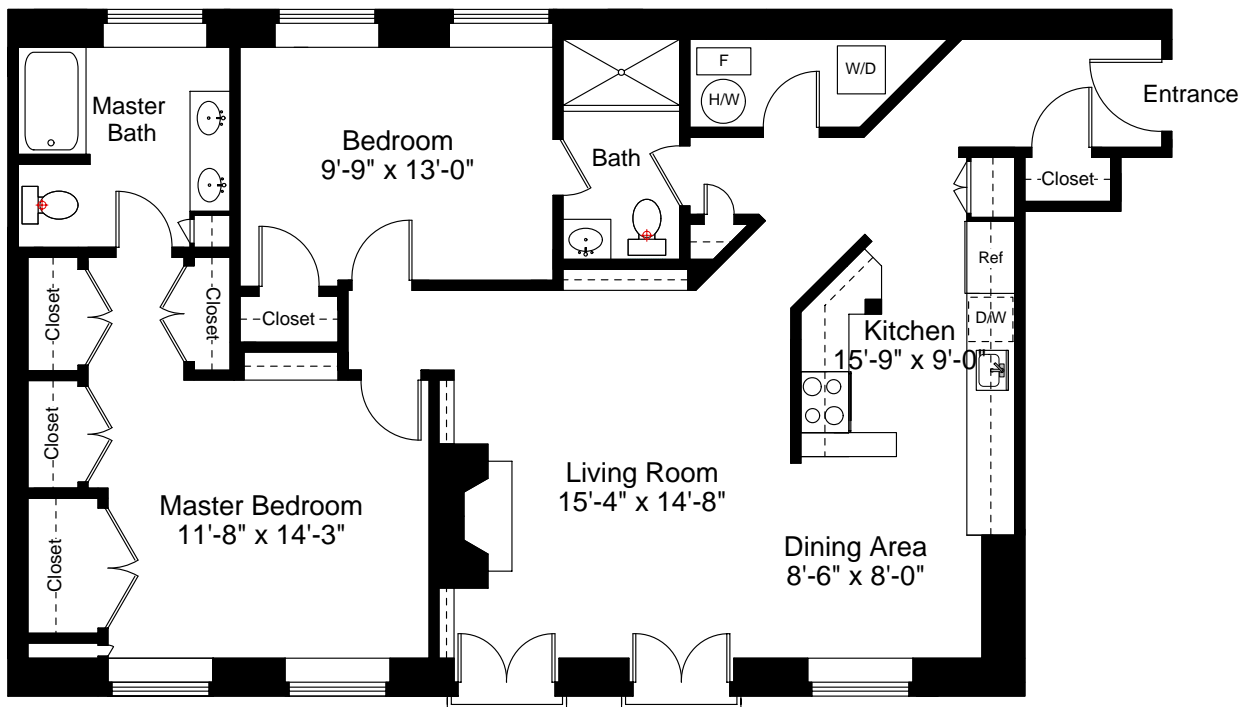


Unit 3A Storage Plan
Approx. 208 SF



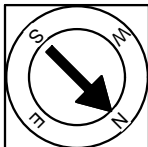
Unit 3A Floor Plan
Ceiling Height = 12'-9"

20 Tileston Street
Boston, MA 02113



Scale 1/8" = 1'-0"

1



Completed: June, 2008

Note: Dimensions are not guaranteed and are provided for informational purposes only.


NEW ENGLAND
FLOOR PLANS
& PHOTOGRAPHY
(800) 328-0217