

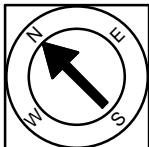
58-59 Commercial Wharf  
 Boston, MA 02110

First Floor Plan  
 Ceiling Height Approx. 9'-0" - 11'-0"



Scale 1/8" = 1'-0"

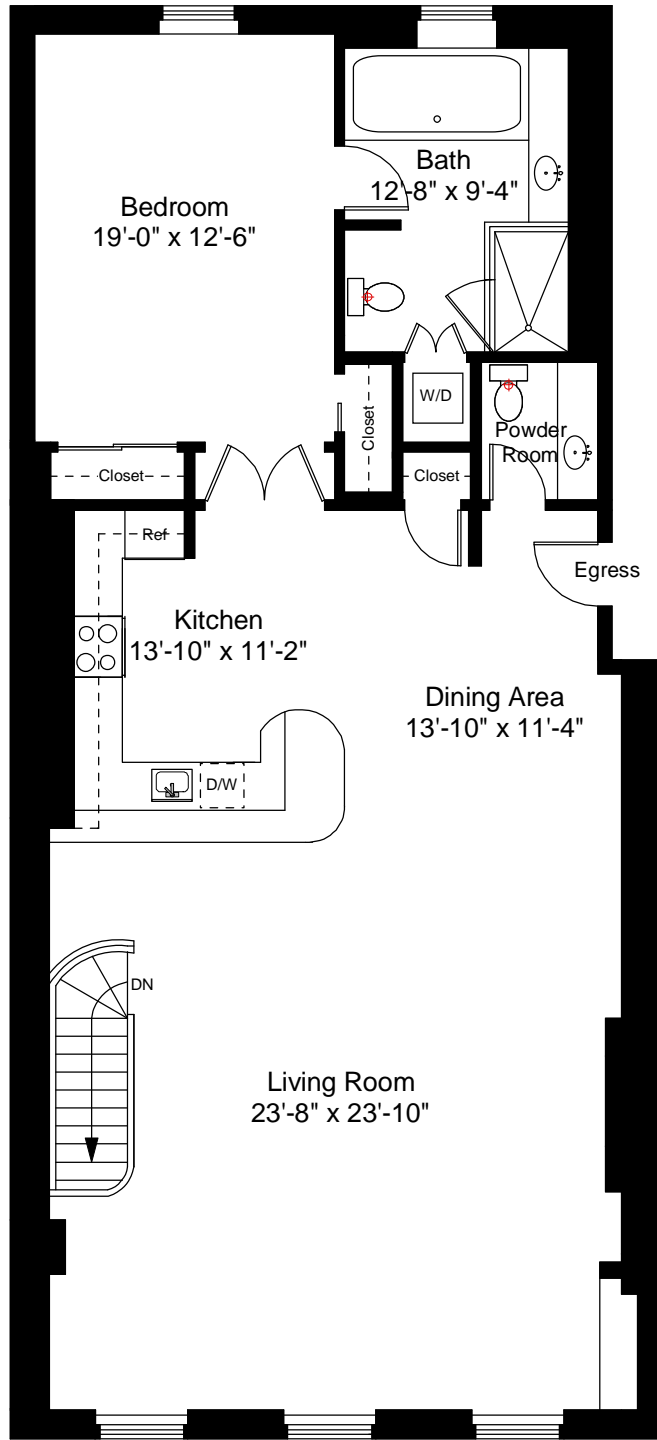
1



Completed: December, 2008

Note: Dimensions are not guaranteed and are provided for informational purposes only.

**NEW ENGLAND**  
 FLOOR PLANS  
 & PHOTOGRAPHY  
 (800) 328-0217



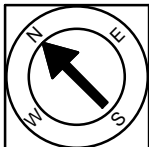
58-59 Commercial Wharf  
Boston, MA 02110

Second Floor Plan  
Ceiling Height Approx. 9'-0" - 11'-0"



Scale 1/8" = 1'-0"

2



Completed: December, 2008

Note: Dimensions are not guaranteed and are provided for informational purposes only.

**NEW ENGLAND**  
— FLOOR PLANS —  
& PHOTOGRAPHY  
(800) 328-0217