

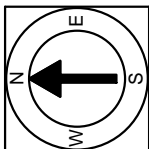
Lower Level Floor Plan
Ceiling Height = 11'-2"

607 Union Wharf
343 Commercial Street
Boston, MA 02109



Scale 1/8" = 1'-0"

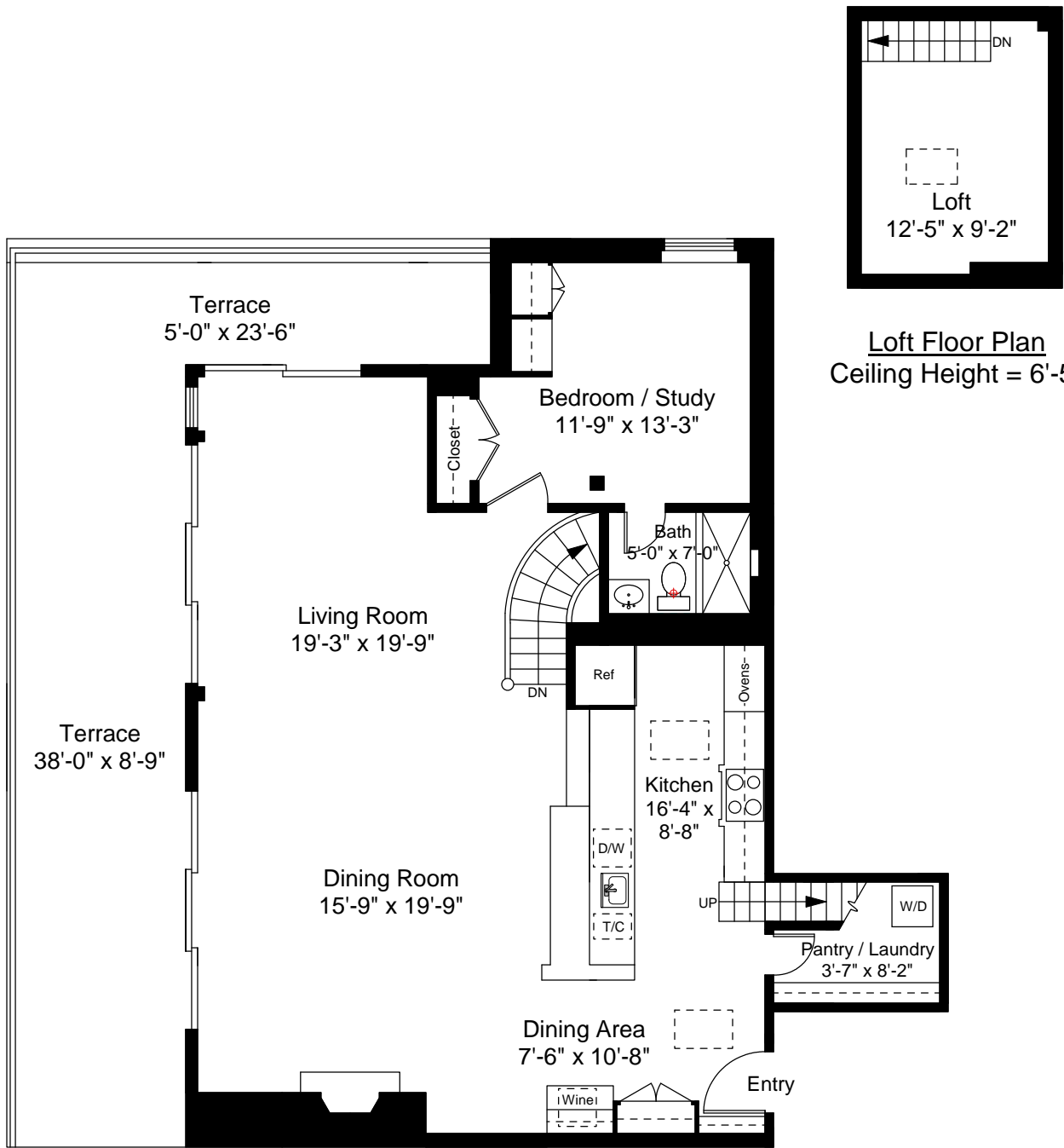
1



Completed: August, 2010

Note: Dimensions are not guaranteed and are provided for informational purposes only.

NEW ENGLAND
FLOOR PLANS
& PHOTOGRAPHY
(800) 328-0217



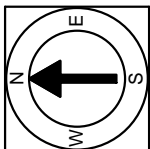
607 Union Wharf
 343 Commercial Street
 Boston, MA 02109

Upper Level Floor Plan
 Ceiling Height = 9'-3"



Scale 1/8" = 1'-0"

2



Completed: August, 2010
 Note: Dimensions are not guaranteed and are provided for informational purposes only.

NEW ENGLAND
 FLOOR PLANS
 & PHOTOGRAPHY
 (800) 328-0217