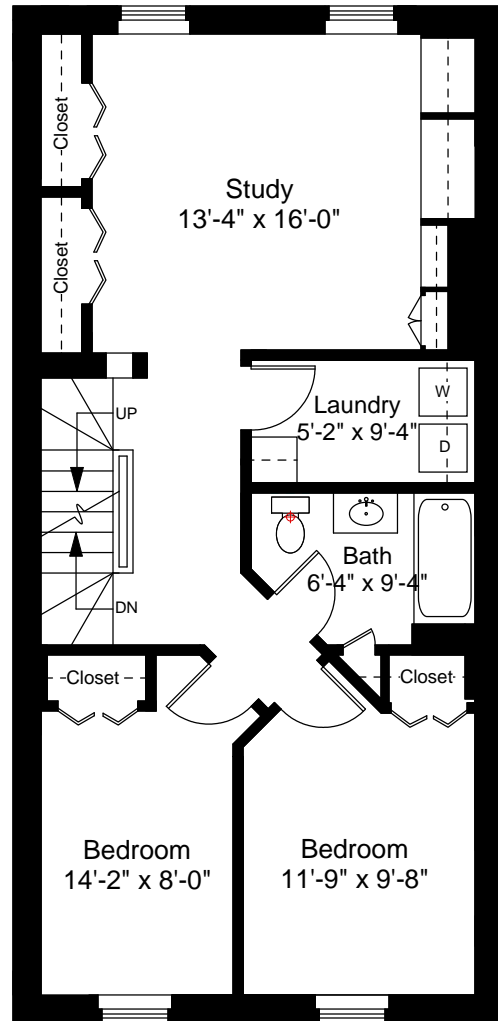


First Floor Plan
Ceiling Height = 8'-5"



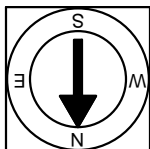
Second Floor Plan
Ceiling Height = 8'-5"

Union Wharf, Townhouse 12
Boston, MA 02109



Scale 1/8" = 1'-0"

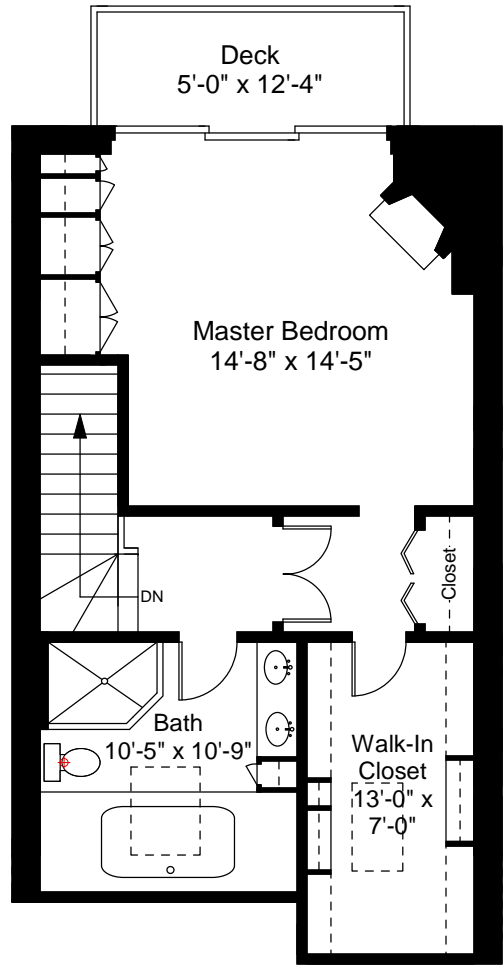
1



Completed: February, 2010

Note: Dimensions are not guaranteed and are provided for informational purposes only.


NEW ENGLAND
FLOOR PLANS
& PHOTOGRAPHY
(800) 328-0217



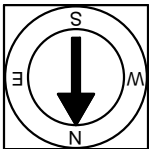
Third Floor Plan
12'-3" Vaulted Ceilings

Union Wharf, Townhouse 12
Boston, MA 02109



Scale 1/8" = 1'-0"

2



Completed: February, 2010
Note: Dimensions are not guaranteed and are provided for informational purposes only.

