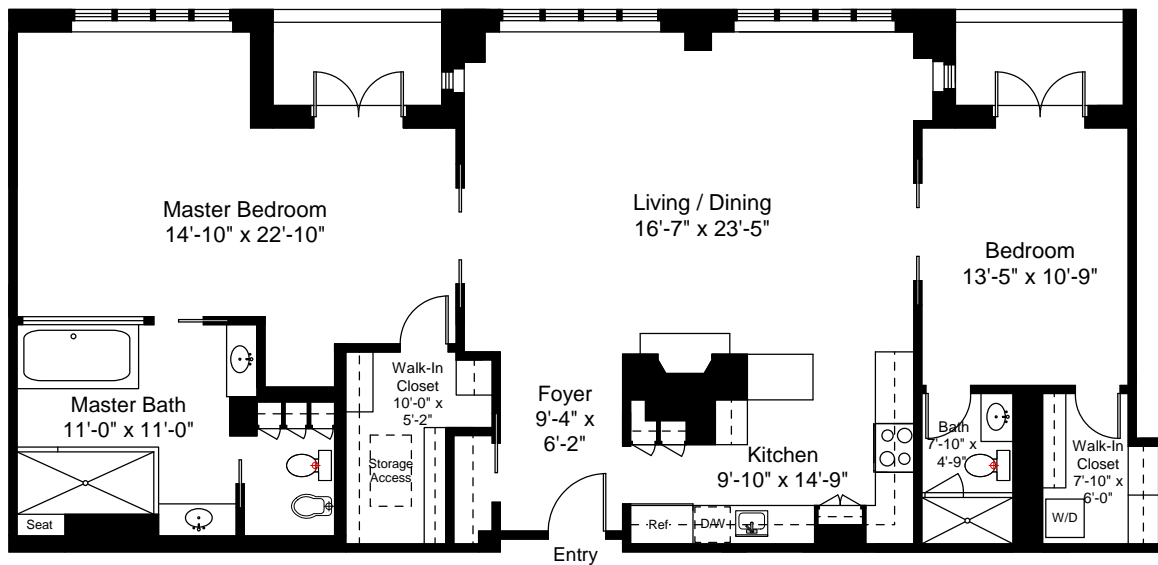


Storage Floor Plan
Ceiling Height = 8'-8"



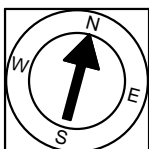
Unit PH7 Floor Plan
Ceiling Height = 9'-9"

20 Rows Wharf
Boston, MA 02110



Scale 1/8" = 1'-0"

1



Completed: November, 2010

Note: Dimensions are not guaranteed and are provided for informational purposes only.

NEW ENGLAND
FLOOR PLANS
& PHOTOGRAPHY
(800) 328-0217