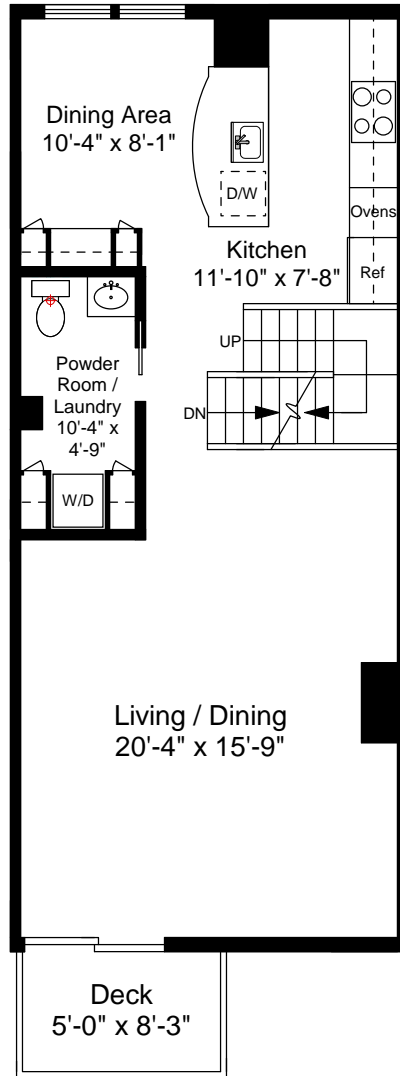


Entry Detail Plan
Ceiling Height = 8'-4"



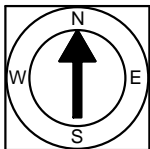
First Floor Plan
Ceiling Height = 7'-6"

357 Commercial Street, Unit 809
Boston, MA 02109



Scale 1/8" = 1'-0"

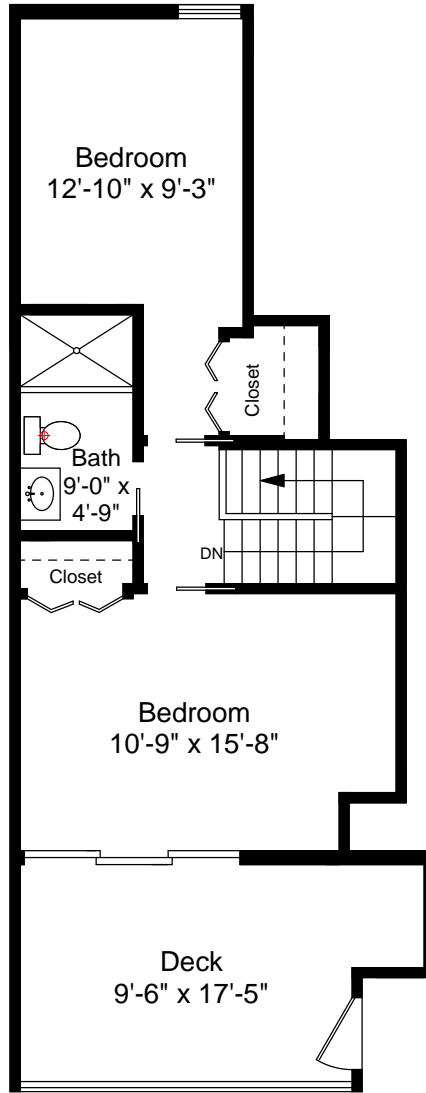
1



Completed: April, 2010

Note: Dimensions are not guaranteed and are provided for informational purposes only.


NEW ENGLAND
FLOOR PLANS
& PHOTOGRAPHY
(800) 328-0217



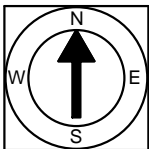
Second Floor Plan
Ceiling Height = 7'-6"

357 Commercial Street, Unit 809
Boston, MA 02109



Scale 1/8" = 1'-0"

2



Completed: April, 2010

Note: Dimensions are not guaranteed and are provided for informational purposes only.


NEW ENGLAND
— FLOOR PLANS —
& PHOTOGRAPHY
(800) 328-0217