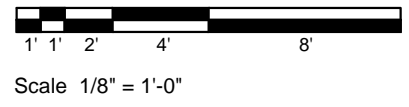
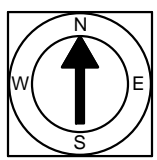


First Floor Plan
Ceiling Height = 7'-8"

819 Lincoln Wharf
357 Commercial Street
Boston, MA 02109

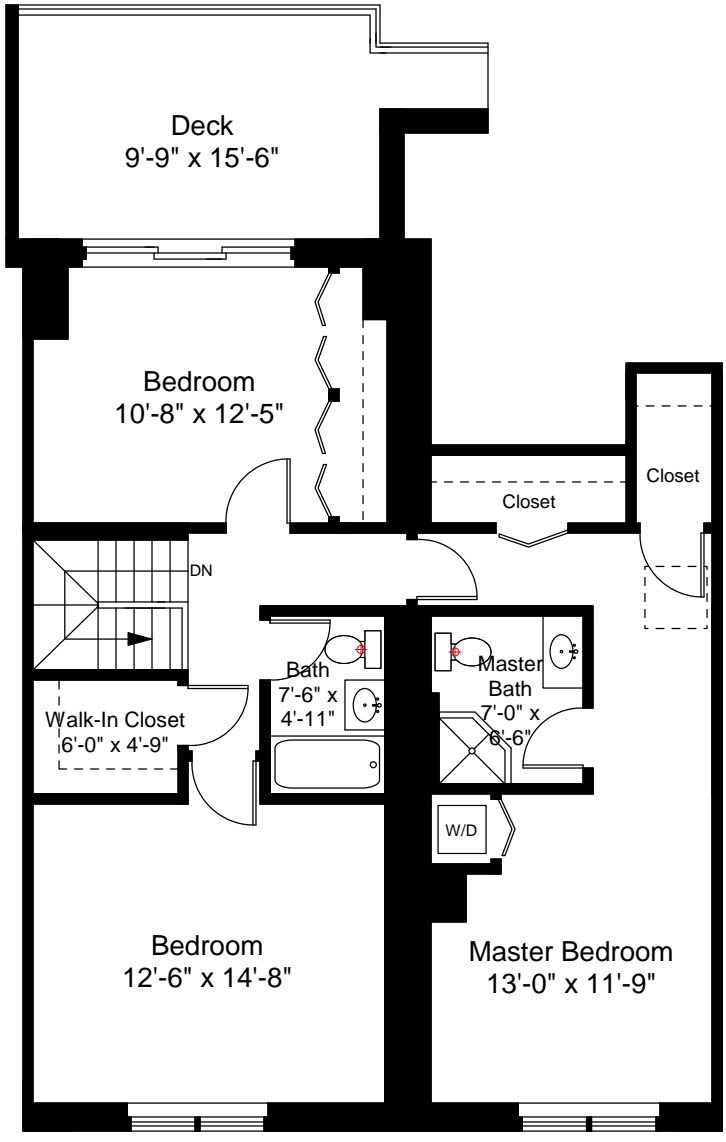


1



Completed: February, 2010
Note: Dimensions are not guaranteed and are provided for informational purposes only.





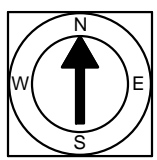
Second Floor Plan
Ceiling Height = 7'-4"

819 Lincoln Wharf
357 Commercial Street
Boston, MA 02109



Scale 1/8" = 1'-0"

2



Completed: February, 2010
Note: Dimensions are not guaranteed and are provided for informational purposes only.

NEW ENGLAND
FLOOR PLANS
& PHOTOGRAPHY
(800) 328-0217